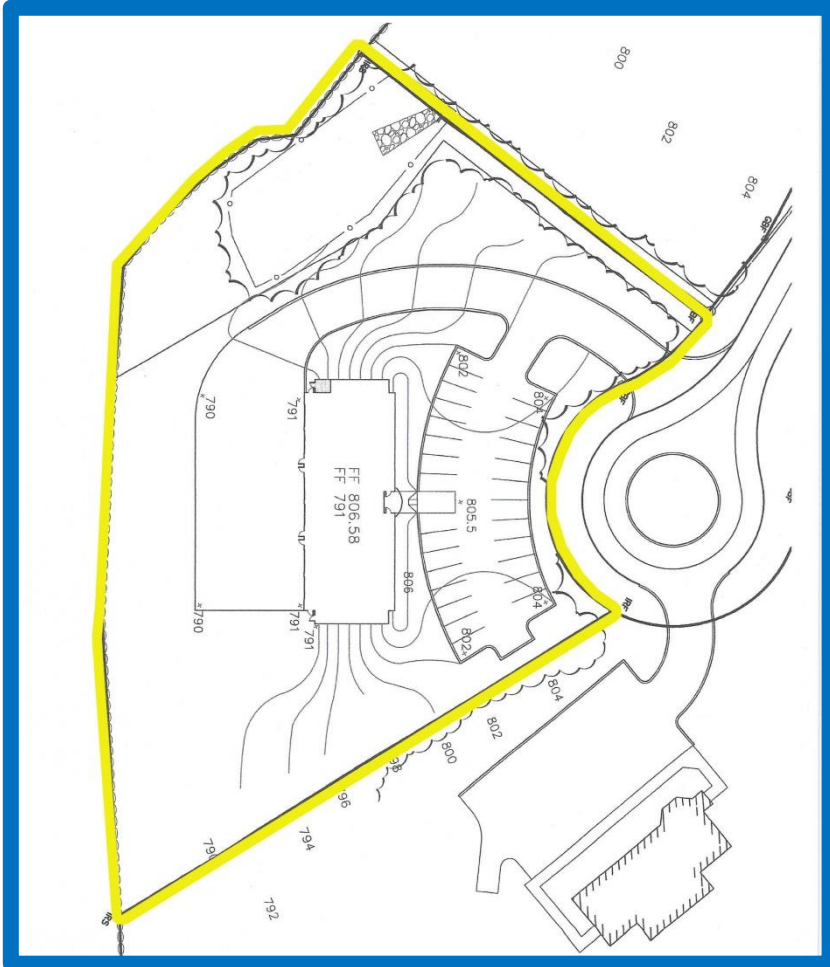


PRICED TO SELL!!!!

\$40,000



**1.5 +/- Acres
Corporate Drive,
Belmont**

**WEEKS
COMMERCIAL**

**Last lot available in
first class Commercial
Office Park*

**Several conceptual
designs available for
review to determine
fit*

**Assessed at \$87,900*

Offered by



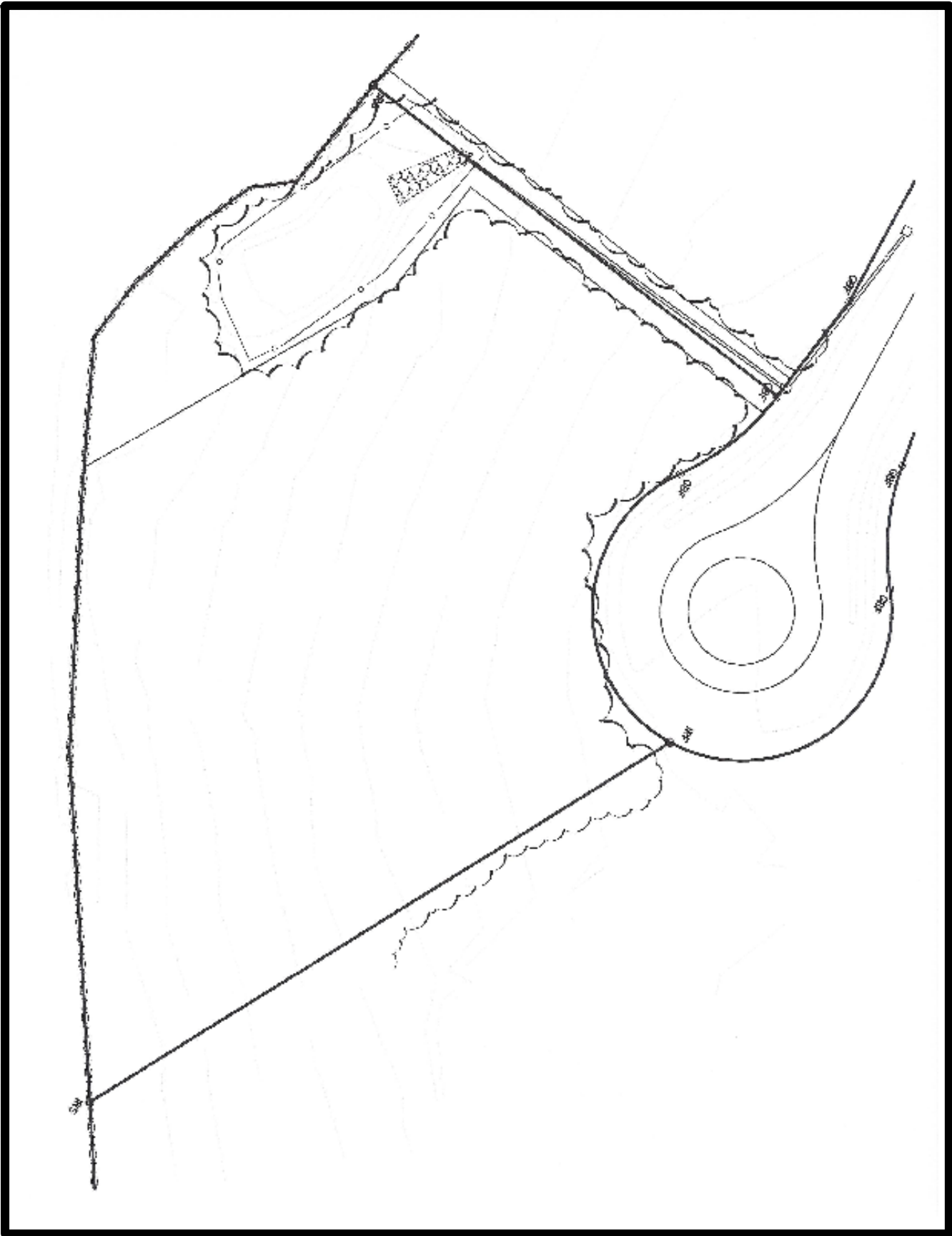
Kevin Sullivan
Sales Associate

WEEKS COMMERCIAL
350 Court Street
Laconia, NH 03246
603.528-3388 ext. 305
Cell: 603.630.3276

ksullivans@weeksccommercial.com
WWW.WEEKSCCOMMERCIAL.COM

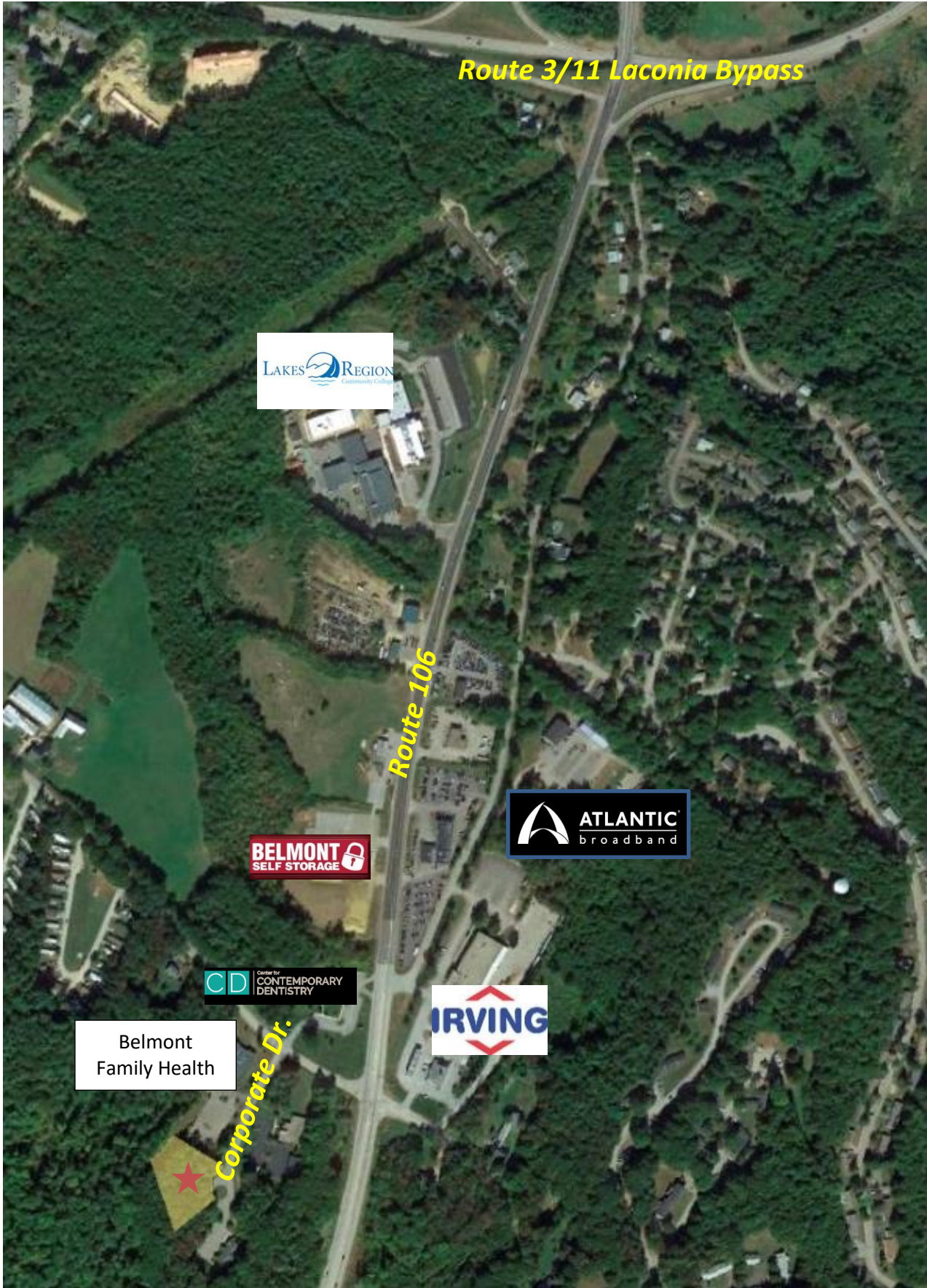
NOTICE: The information provided herein is believed to be accurate, but Weeks Commercial, its salespersons and employees do not warrant or guarantee its accuracy in case of error or mistake. Therefore, it is recommended that all information be verified, and that the professional advice of an attorney and/or an accountant be sought before executing any contractual agreement.

EXISTING CONDITIONS



NOTICE: The information provided herein is believed to be accurate, but Weeks Commercial, its salespersons and employees do not warrant or guarantee its accuracy in case of error or mistake. Therefore, it is recommended that all information be verified, and that the professional advice of an attorney and/or an accountant be sought before executing any contractual agreement.

GOOGLE MAP



NOTICE: The information provided herein is believed to be accurate, but Weeks Commercial, its salespersons and employees do not warrant or guarantee its accuracy in case of error or mistake. Therefore, it is recommended that all information be verified, and that the professional advice of an attorney and/or an accountant be sought before executing any contractual agreement.

PERMITTED USES

Town of Belmont

ARTICLE 5

ARTICLE 5. - TABLE 1
Zoning District Regulations
Table of Permitted Uses

Note: P=Permitted Use; E=Special Exception Necessary; N=Not Permitted.

	Commercial	Industrial	Residential Multi-Family	Residential Single Family	Rural	Village
Commercial Uses						
Accessory Building/Use	P	P	P	P	P	P
Activity related to the removal of sand, gravel, loam or stone for commercial purposes	P	P	P	P	P	P
Agricultural Animals (Lots 3 acres & larger)	E	E	P	P	P	E
Agricultural Animals (Lots less than 3 acres)	E	E	E	E	E	E
Aircraft Landing Area	E	E	E	E	E	E
Boat Sales & Service	P	P	N	N	E	N
Boat Storage Facilities-Exterior	E	N	N	N	N	N
Boat Storage Facilities-Interior	P	P	N	N	E	N
Business & Professional Offices	P	P	N	N	E	P
Campgrounds	P	N	N	N	E	N
Campground RV Resort	N	N	P	N	P	N
Commercial Greenhouses	P	P	E	E	E	E
Contractor's Yard	E	P	N	N	E	N
Diner, Restaurants, Taverns	P	P	E	N	P	P
Equestrian Centers, Stables	E	E	N	N	P	N
Essential Services Public, Private Utility Suppliers	P	P	P	P	P	P
Funeral Homes	N	N	P	P	P	P
Hotel/Motel	P	E	N	E	E	E
Laundry, Dry Cleaners	P	P	N	N	N	P
Licensed Hawking & Peddling	P	P	N	N	N	P
Lumber Yards	P	P	N	N	N	N
Manufactured Housing Sales Lots	P	N	N	N	N	N
Manufacturing - Light	P	P	N	N	N	N
Medical and Dental Offices	P	N	N	N	N	P
Motor Vehicle & Trailer Services, Sales, Repair, Gas Stations and Parts Sales	P	P	N	N	E	E
Movie Theaters	P	N	N	N	N	P
Personal Wireless Service	E	E	N	N	E	N
Radio and Television Installations	E	E	N	N	E	N
Recreational Facilities-Indoor	E	E	P	P	P	P
Recreational Facilities-Outdoor	E	E	E	N	E	E
Repair Services, Machine Shops, Small Assembly	P	P	N	N	E	E
Resource Recycling	P	P	N	N	E	N
Retail Stores	P	P	N	N	N	P
Sales lot – Satellite	P	P	N	N	N	N
Sawmills	E	P	N	N	E	N
Service Business	P	E	E	N	E	P
Site Construction Trailer	P	P	P	P	P	P
Sludge/Biosolids	N	N	N	N	N	N

Zoning Ordinance

5-2

Ed. 03/13/18

	Commercial	Industrial	Residential Multi-Family	Residential Single Family	Rural	Village
Storage Vehicles & Trailers	P	P	N	N	N	N
Treated Soils (add'l SE criteria Art 13)	E	E	N	N	N	N
Veterinary Clinics, Boarding Kennels	P	N	N	N	E	N
Warehousing/self-storage-Exterior	E	N	N	N	N	N
Warehousing/self-storage-Interior	P	P	N	N	E	N
Industrial Uses:						
Accessory Building/Use	P	P	P	P	P	P
Blast Furnaces	N	N	N	N	N	N
Fertilizer Plants	N	N	N	N	N	N
Manufacturing - Heavy	N	P	N	N	N	N
Municipal Solid Waste Transfer Station	N	P	N	N	N	N
Petroleum & Propane Gas Bulk Storage Fac.	E	P	N	N	N	N
Processing of Ammonia, Chlorine Petroleum or Explosives	N	N	N	N	N	N
Rendering Plants	N	N	N	N	N	N
Salvage/Junkyards including automobile, truck, bus, machinery, metal	N	P	N	N	E	N
Slaughter Houses	N	N	N	N	N	N
Smelters	N	N	N	N	N	N
Storage Vehicles & Trailers	P	P	N	N	N	N
Tanneries	N	N	N	N	N	N
Treated Soils (add'l SE criteria Art 13)	E	E	E	E	E	E
Truck Terminal	E	P	N	N	N	N
Institutional Uses:						
Accessory Building/Use	P	P	P	P	P	P
Assisted Living Facility	E	N	N	N	E	E
Cemeteries, Private Burial Grounds, and Burials on Private Property	N	N	N	N	P	N
Churches	N	N	P	P	P	P
Fraternal & Social Clubs, Halls	N	N	P	P	P	P
Hospitals/Clinics	P	N	N	N	E	P
Licensed Day Care Facilities	P	P	P	P	P	P
Nursing & Convalescent facilities	P	N	N	N	E	P
Schools, Public & Private	N	N	P	P	P	P
Residential Uses:						
Accessory Dwelling Unit	N	N	P	E	P	P
Accessory Building/Use	P	P	P	P	P	P
Agricultural Animals (Lots 3 acres & larger)	E	E	P	P	P	E
Agricultural Animals (Lots less than 3 acres)	E	E	E	E	E	E
Agriculture, Forestry Management	P	P	P	P	P	P
Bed & Breakfast Establishment	P	N	E	E	E	E
Open Space Development	N	N	P	P	P	P
Open Space Development (Parent Tract Under 10 Acres)	N	N	N	N	N	E
Dwelling - Multi-Family	N	N	P	N	N	P
Dwelling - Single Family	N	N	P	P	P	P
Dwelling - Single Family-Subordinate To Non-Residential Use	CU	CU	N	N	N	N
Dwelling - Two Family	N	N	P	N	P	P

	Commercial	Industrial	Residential Multi-Family	Residential Single Family	Rural	Village
Half-way House	E	N	N	N	N	E
Home Occupations	P	P	P	P	P	P
Lodging House	N	N	E	E	E	E
Manufactured Housing-Dwelling (outside of approved park or approved subdivision)	N	N	N	N	N	N
Manufactured Housing Parks & Subdivisions	N	N	P	N	P	N
Shared-homes, Group-living Units	P	N	N	N	E	P

Nonconforming Uses

REFER TO ARTICLE 11